

isotec
SOLAR MOUNTING SYSTEMS

Trapezoidal & Sandwich Roof Mounting System

INSTALLATION GUIDE
TR / 24.02

TABLE OF CONTENTS

- Required Tools 2
- Safety Instructions 3
- Components 4
- Installation 5
- Notes 9

REQUIRED TOOLS



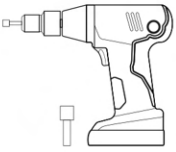
Tape Measure

Must be available to determine the measurements specified in the installation bulundurulmalıdır.



Marker

Must be available to mark the bulundurulmalıdır.



Electric Screwdriver

The following socket bits must be used to mount products at the kullanılmalıdır.

- S10 mm



Torque Wrench

Used to ensure that the hex bolt fastener in the EasyClamp holders is tightened to the desired torque value. kullanılır.

Ölçüm aralığı 5 - 25 N.m yeterlidir.

SAFETY EQUIPMENT



Protective Gloves



Ear Protection



Hard Hat



Safety Shoes



Safety Goggles



Mask



Protective Clothing

SAFETY INSTRUCTIONS

Systems may only be installed and operated by persons who can guarantee compliance with regulations due to their professional qualifications (e.g. education or profession) or their experience.

National and site-specific building regulations, standards and environmental protection regulations must be complied with.

Occupational health and safety and accident prevention regulations, relevant standards and the employer's liability insurance association regulations must be observed. Pay special attention to the following:

Safety clothing must be worn (especially hard hat, safety shoes and gloves).

Two persons are essential for the entire installation process to provide quick assistance in case of an accident.

The module manufacturer's installation instructions must be followed.

Equipotential bonding between individual parts of the system must be carried out as per country-specific regulations.

At least one copy of the installation instructions application drawing must be available on the construction site throughout the entire installation period.

No liability is accepted for defects or damages arising from non-compliance with our installation instructions, failure to use all system components, or during assembly and disassembly of components not supplied by us. The warranty is excluded in this regard.

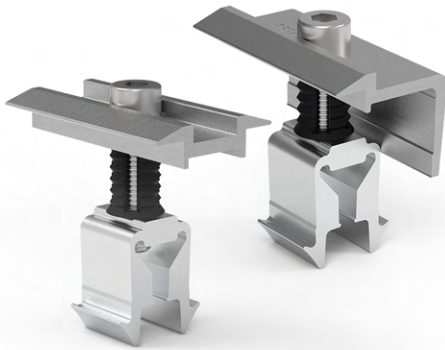
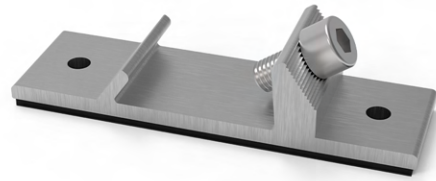
Stainless steel components are available in different corrosion resistance classes. In any case, the expected corrosion load for the building or component must be checked. Z600 coated steel profiles may show red corrosion stains after a certain period that do not affect the statics.

In cases of non-compliance with our general safety instructions or installation of different components, ISOTEC Enerji San. Ve Tic. Ltd. Sti. bears no liability.

COMPONENTS

1. ISOTRAP XLA (1)

Provides protection against moisture and leaks thanks to the EPDM tape protector.

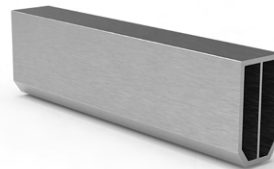


4. ISOBEAM Connector (5)

Used to ensure system continuity.

5. Smart Screw (6)

Used to connect ISOBEAM (4) and ISOBEAM Connector (5) components.



6. ISOBEAM Cap (7)

Provides protection and aesthetic appeal by covering the exposed end of the profile.



7. Sealed Self-Tapping Screw (8) and Waterproof Rivet (9)

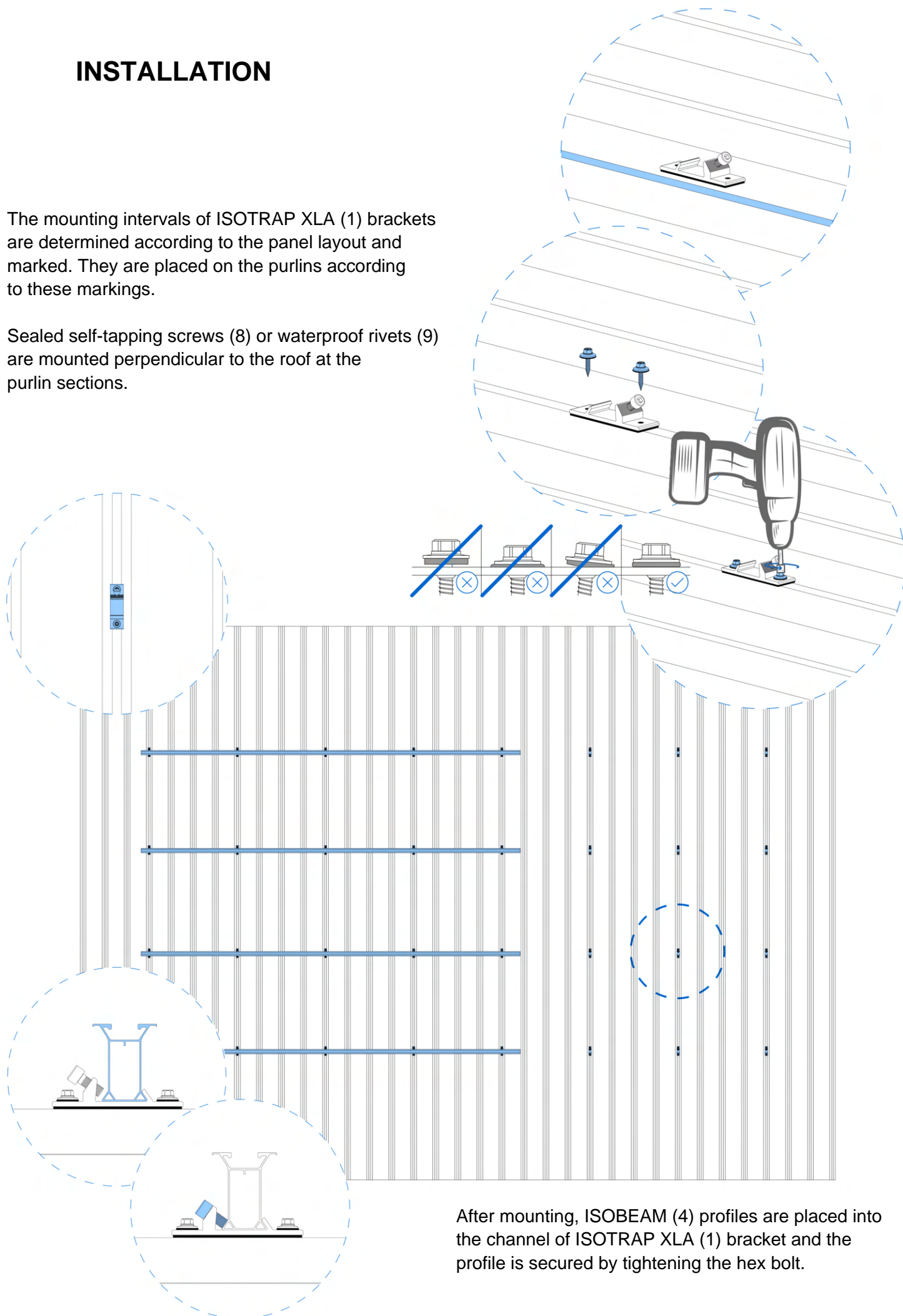
The sealed self-tapping screw preferred for reliable installation (8) prevents leakage thanks to its gasket. It provides maximum force resistance by securing the ISOBEAM (4) profile. The special waterproof rivet (9) with EPDM protector against moisture and leaks guaranteeing 99.9% leak-proof can also be preferred.



INSTALLATION

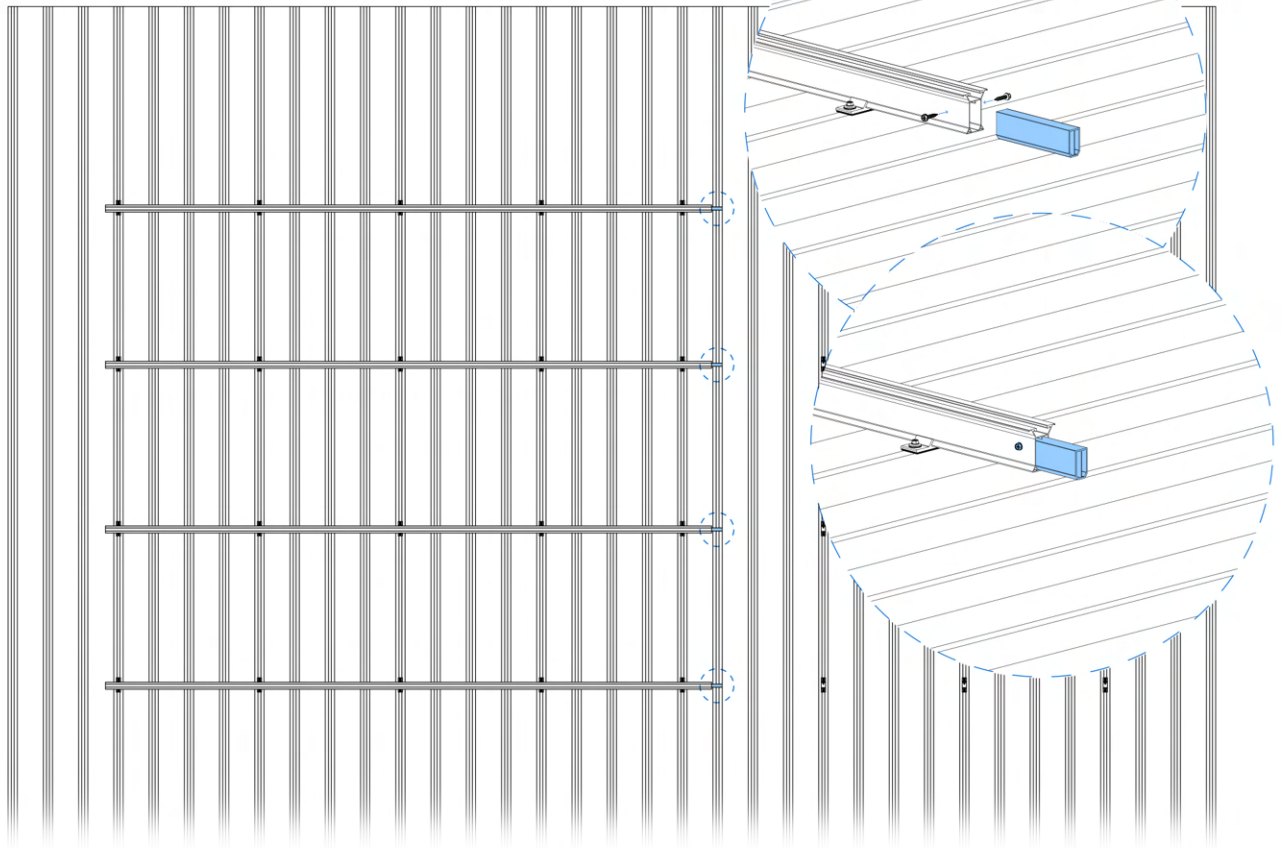
The mounting intervals of ISOTRAP XLA (1) brackets are determined according to the panel layout and marked. They are placed on the purlins according to these markings.

Sealed self-tapping screws (8) or waterproof rivets (9) are mounted perpendicular to the roof at the purlin sections.

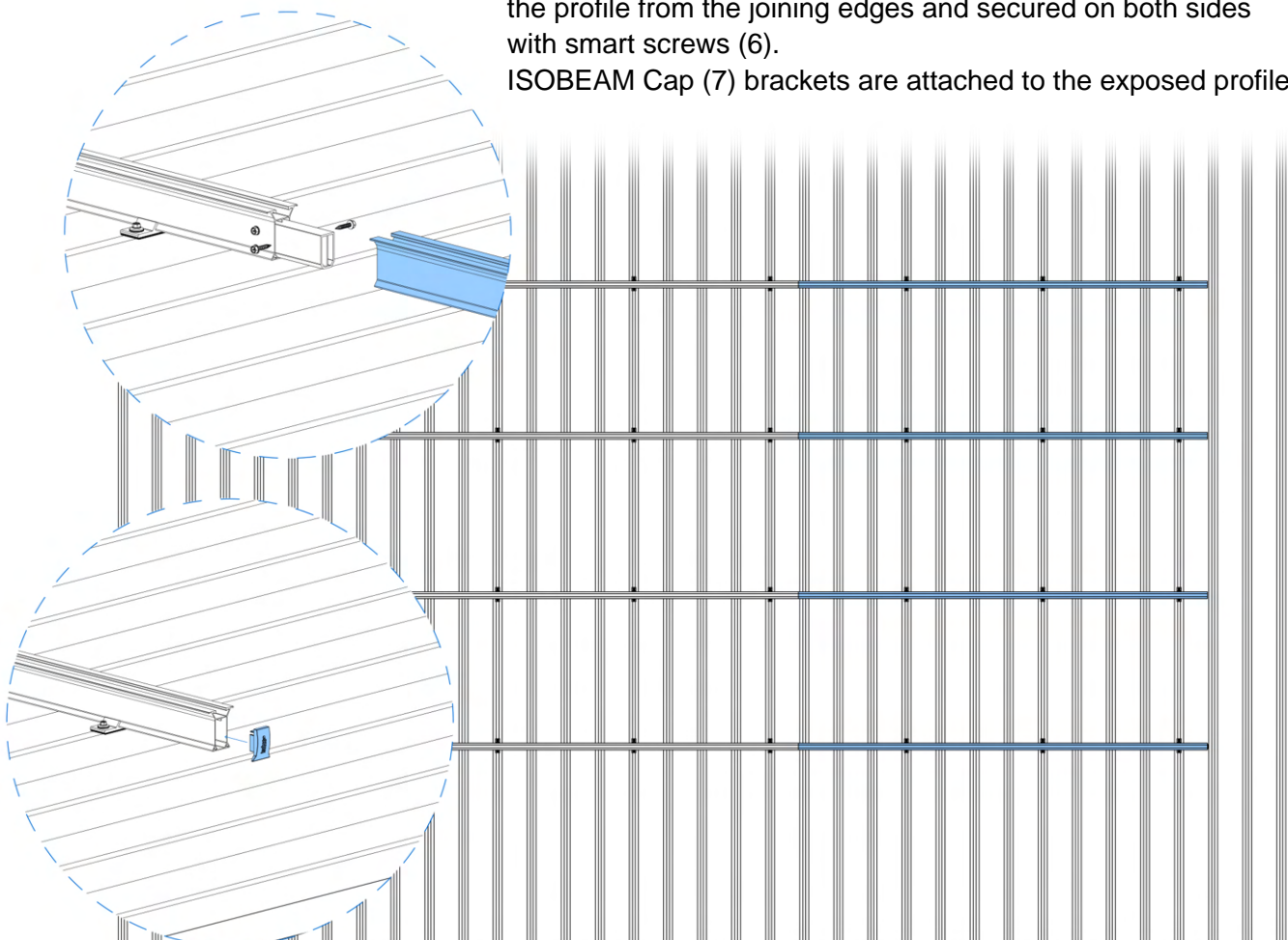


After mounting, ISOBEAM (4) profiles are placed into the channel of ISOTRAP XLA (1) bracket and the profile is secured by tightening the hex bolt.

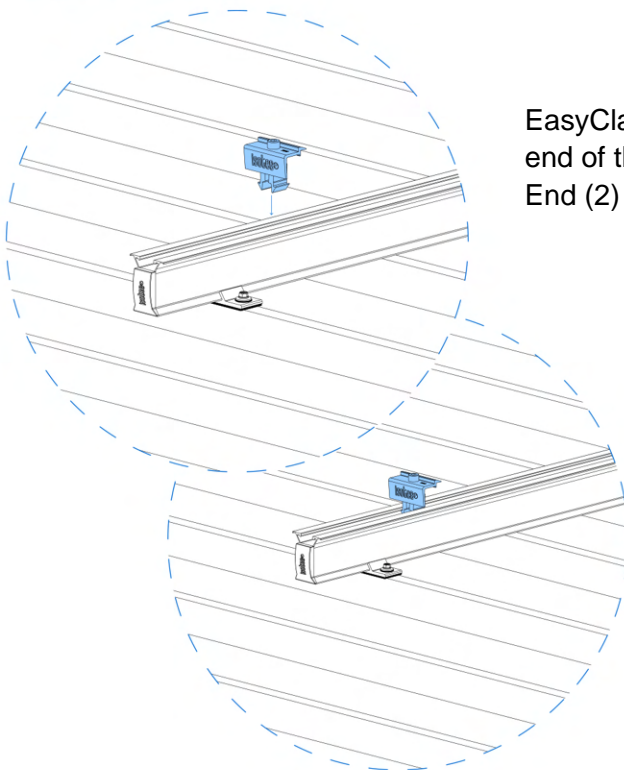
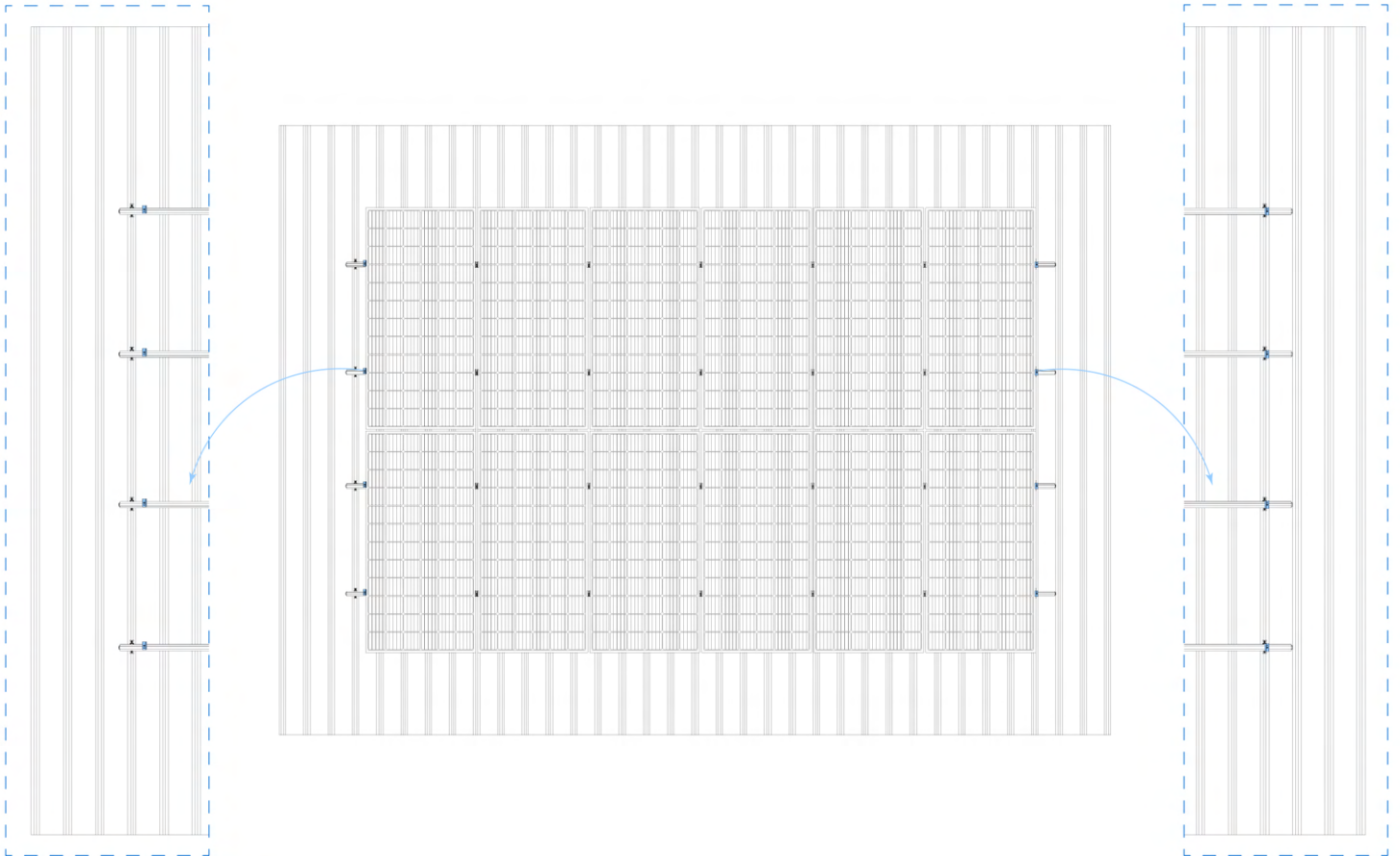
INSTALLATION



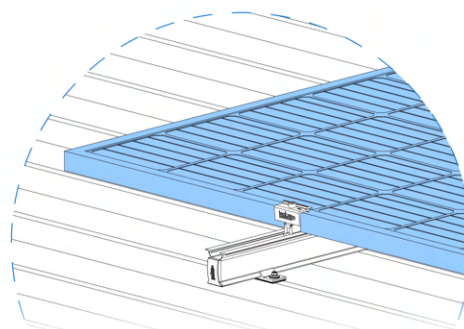
The ISOBEAM Connector (5) bracket is used to ensure system continuity. The ISOBEAM Connector (5) bracket is placed inside the profile from the joining edges and secured on both sides with smart screws (6). ISOBEAM Cap (7) brackets are attached to the exposed profile ends.



INSTALLATION

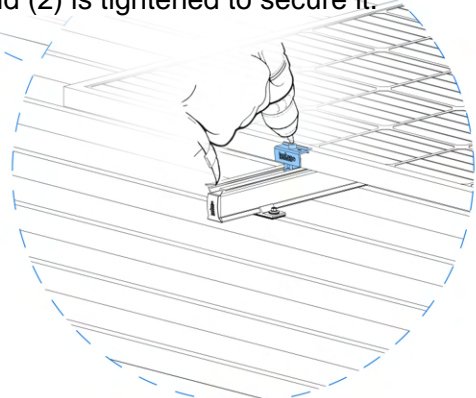


EasyClamp End (2) is used at the beginning and end of the system to mount panels. EasyClamp End (2) is placed into the ISOBEAM (4) profile channel.



The solar panel is placed on the system and then EasyClamp End (2) is tightened to secure it.

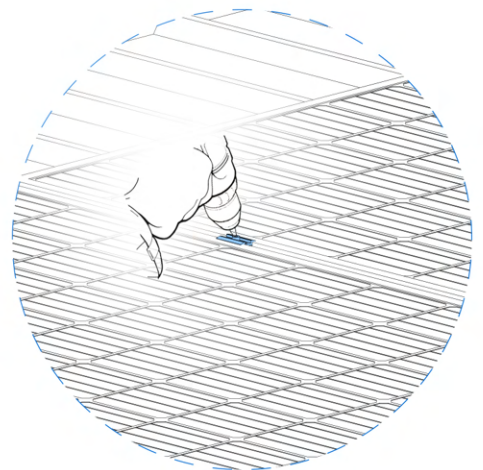
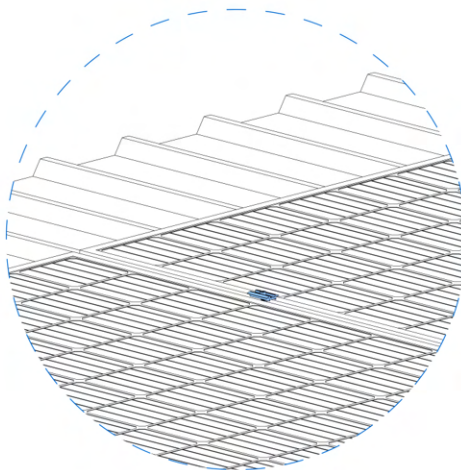
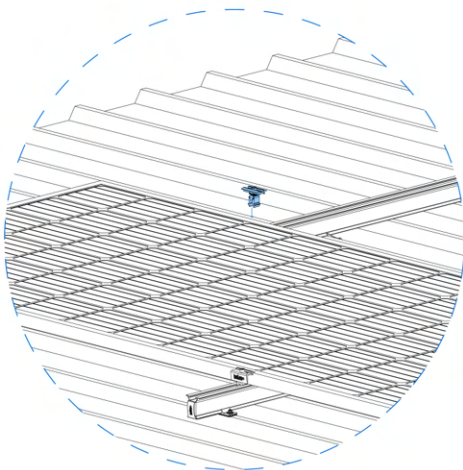
EasyClamp Middle (3) brackets are added between two panels as preparation.



INSTALLATION



System continuity is ensured by using EasyClamp Middle (3) in the section between two panels.



After the EasyClamp Middle (3) bracket is placed holding two panels, it must be tightened and secured.

Thus the system installation is completed.

NOTE

This image shows a full page of blank graph paper. The grid consists of small, uniform squares formed by thin, light gray lines. A single vertical line runs down the center of the page, dividing it into two equal halves. There are no margins, text, or other markings on the paper.

Dear customer,

Thank you for choosing ISOTEC brand for your solar energy mounting system.

Your feedback is very important to us.

For all questions about suggestions, feedback and installation, you can reach us at +90 (262) 244 43 09 or by email at info@isotec.com.tr.

Follow us on our social media accounts to stay informed about the latest developments.

