



isotee
SOLAR MOUNTING SYSTEMS

NX

Trapezoidal & Sandwich Roof Mounting System

ASSEMBLY INSTRUCTIONS
TR / 24.02

CONTENTS

- Necessary Tools 2
- Safety Instructions 3
- Components 4
- Assembly 5
- Notes 7

NECESSARY TOOLS



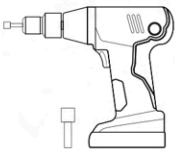
Tape Measure

To determine the measurements specified in the assembly manual on the surface, it must be available.



Marker

To mark the determined dimensions, it must be available.



Electric Screwdriver

It is used to mount the products at the marked points. The following socket bits should be used.

- S10 mm



Torque Wrench

It is used to ensure that the hex bolt fastener in the Easyclamp holders is tightened to the desired torque value.

Measurement range 5 - 25 N.m is sufficient

SAFETY EQUIPMENT



Protective Gloves



Ear Protection



Helmet



Safety Shoes



Safety Glasses



Mask



Protective Clothing

SAFETY INSTRUCTIONS

Systems may only be installed and operated by persons who can ensure proper execution based on their professional qualifications (e.g. training or profession) or experience.

National and site-specific building regulations, standards and environmental protection regulations must be observed.

Occupational health and safety regulations, relevant standards and regulations of the professional associations must be observed. Special attention should be paid to the following:

Safety clothing must be worn (in particular safety helmet, work shoes and gloves).

The presence of two persons is essential for the entire assembly process to provide quick assistance in case of an accident.

The assembly instructions of the module manufacturer must be observed.

Equipotential bonding between individual system parts must be carried out in accordance with the respective national regulations.

During the entire assembly period, it must be ensured that at least one copy of the assembly instructions and application drawing is available on site.

Non-observance of our assembly instructions, non-use of all system components, defects or damages arising during assembly and disassembly of components not supplied by us are not accepted. The warranty is excluded in this context.

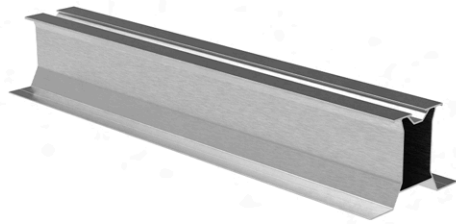
Stainless steel components are available in various corrosion resistance classes. In any case, it should be checked what corrosion load is expected for the building or component. Steel profiles coated with Z600 may show red corrosion spots after a certain time, which do not affect the structural integrity.

In cases such as non-observance of our general safety instructions or installation of deviating components, ISOTEC Enerji San. ve Tic. Ltd. Sti. assumes no liability.

COMPONENTS

1. Isotrap S60-NX (1)

Panel carrier profile.

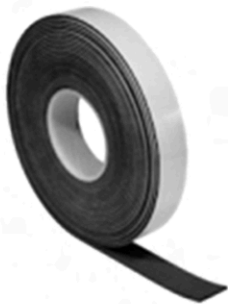


2. EasyClamp End U60 V2 (2) and EasyClamp Mid V3 (3)

Compatible with all ISOTEC systems. Universal clamps can be easily installed with all framed PV modules of 30 - 45 mm height.

EasyClamp End U60 V2 (2) should be used for the outer edges of the panels.

EasyClamp Mid V3 (3) should be used for the edges between two panels.



3. EPDM (4)

Adhered to the bottom surface of the Isotrap S60-NX profile, it prevents leakage.

4. Self-drilling Screw with Seal (5)

Preferred for reliable installation, the self-drilling screw with seal prevents leakage.

By fixing the Isotrap S60-NX profile, maximum force resistance is ensured.



5. Waterproof Rivet (6)

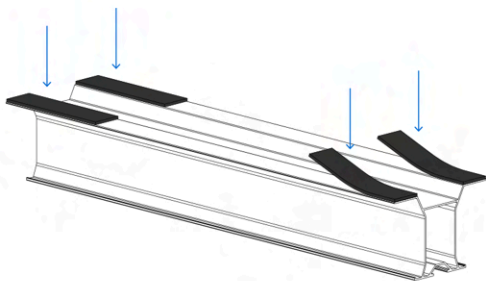
With its EPDM protector that guards against moisture and leakage, this special rivet provides 99.9% tightness guarantee. By fixing the Isotrap S60-NX profile, maximum force resistance is ensured.



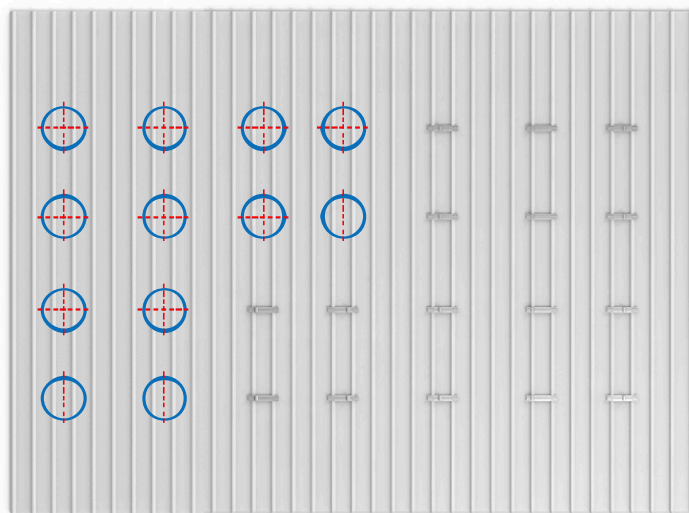
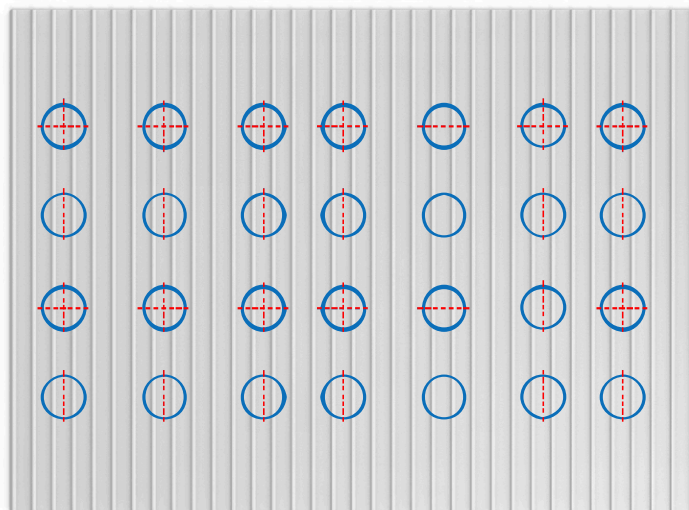
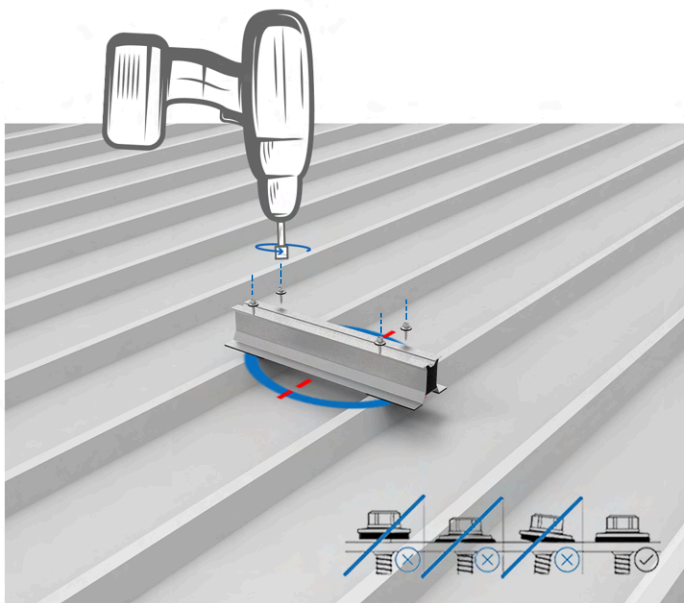
ASSEMBLY

1. Marking

According to the panel layout, the Isotrap S60-NX (1) profile mounting ridge intervals are determined and marked.



Isotrap S60-NX (1) profiles, with 4 EPDM (4) pieces adhered, are placed on the ridges according to this marking.



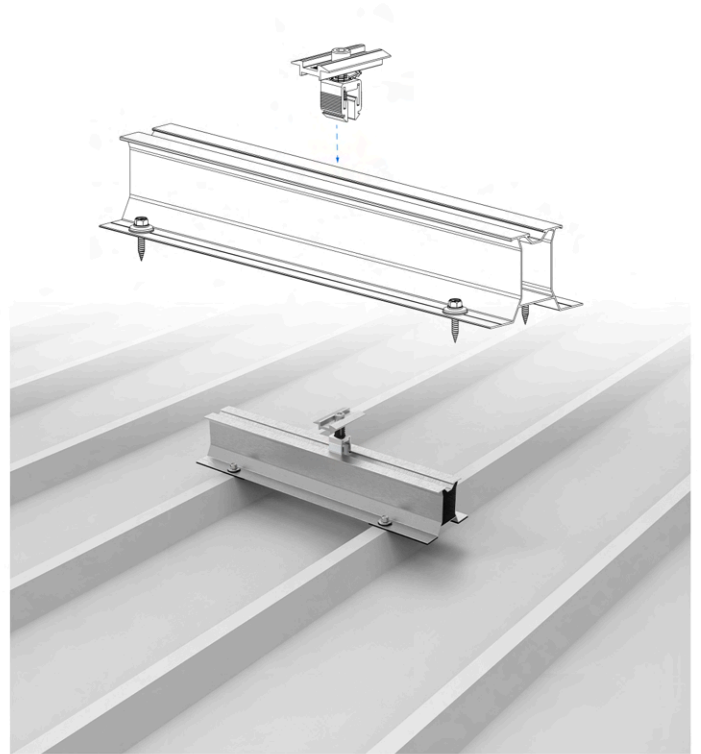
2. Fixation

Self-drilling screws (5) or waterproof rivets (6) are mounted vertically through the parts corresponding to the ridge on the roof and the seal opening must be observed.

ASSEMBLY

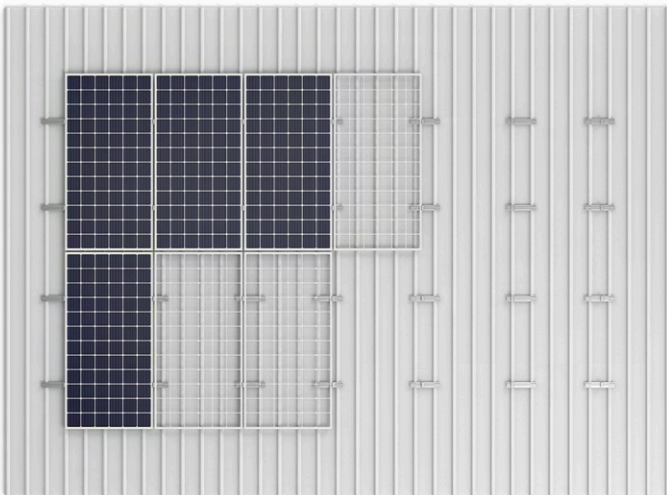
3. Clamp

On the mounted Isotrap S60-NX (1) profiles, taking their positions into account, Easyclamp End (2) or Easyclamp Mid (3) panel holders are placed.



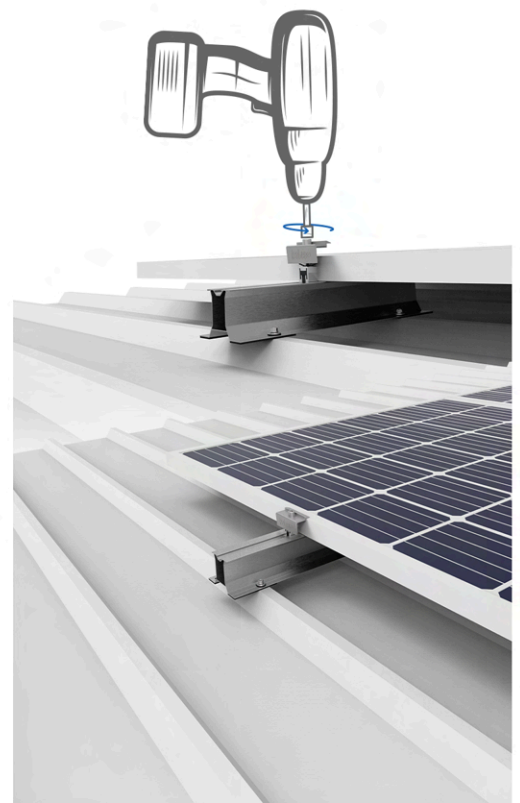
4. Panel

The panels are placed onto the Isotrap S60-NX (1) profile

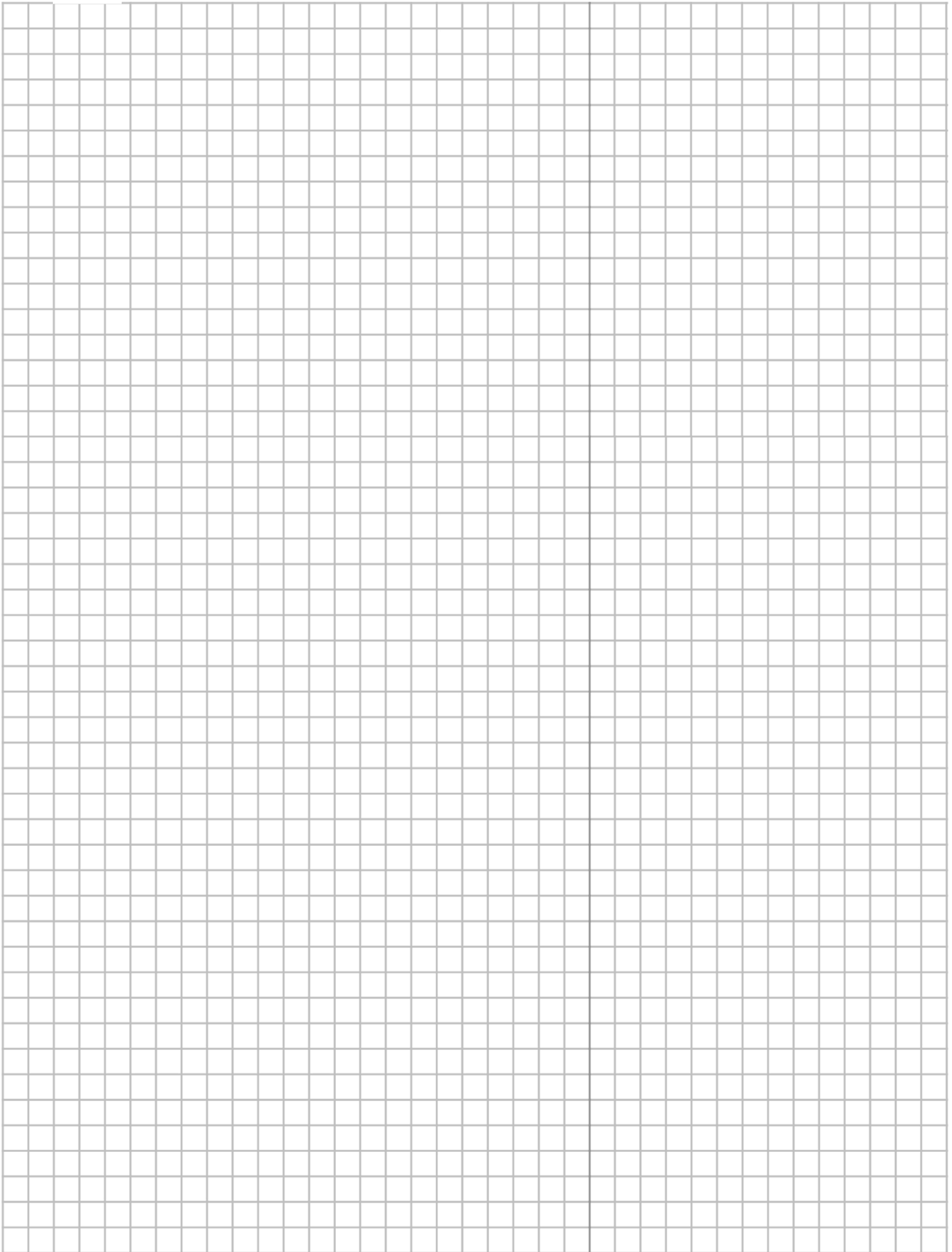


5. Assembly

The panel assembly is completed by tightening the hex screw on the Easyclamp holders (2)-(3) with 14-17 N.m torque.



NOTES





Dear valued customer,

Thank you for choosing ISOTEC for your solar energy mounting system.

Your opinion is very important to us.

For all your questions regarding suggestions, feedback and installation, you can reach us anytime at +90 (262) 244 43 09 or by e-mail at info@isotec.com.tr.

You can stay informed about current developments by following us on our social media accounts.

