



isoteco
SOLAR MOUNTING SYSTEMS

ISO TRAP MINI V3

Trapezoidal & Sandwich Roof Mounting System

ASSEMBLY GUIDE
ENG / 23.02

CONTENTS

- Required Tools 2
- Safety Instructions 3
- Components 4
- Assembly 5
- Notes 7

REQUIRED TOOLS



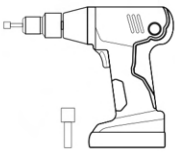
Tape Measure

Dimensions specified in the assembly manual to detect on the application surface must be available.



Marker

To mark the detected dimensions should be available.



Electric Screwdriver

Mount the products on the marked points the following sockets for should be used.

- S10 mm



Torquemeter

Inbus in easyclamp holders the desired torque of the bolt fastener. to make sure it's tight used. Measuring range 5 - 25 N.m is sufficient.

SAFETY INSTRUCTIONS



Protective Gloves



Earpiece



Helmet



Safety Shoes



Safety Glasses



Mask



Protective Clothing

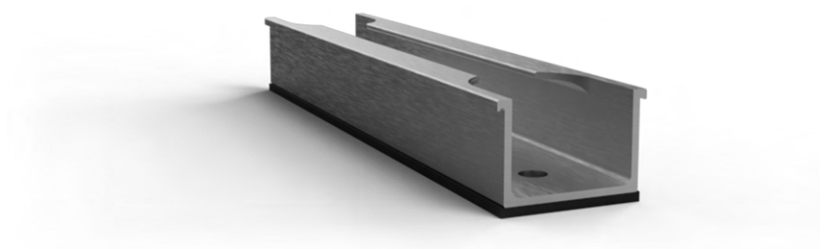
SAFETY INSTRUCTIONS

- Systems may only be assembled and commissioned by persons who can guarantee proper implementation based on their specialised suitability (e.g. training or profession) or experience.
- National and site-specific building codes, standards and environmental regulations must strictly be adhered to.
- Occupational safety and accident prevention regulations, relevant standards as well as regulations of professional associations must be complied with. The following must be particularly paid attention to:
 - Protective clothing must be worn (especially safety helmet, work boots and gloves).
 - Two persons must be present during the entire assembly process, in order to ensure rapid assistance in case of an accident.
 - The assembly instructions of the module manufacturer must be adhered to.
 - Equipotential bonding between individual system components must be performed in compliance with the respective national regulations.
 - During the entire assembly time it must be ensured that at least one copy of the assembly instruction is available at the construction site.
 - Failure to observe our installation regulations and installation instructions and non-use of all system components, as well as the installation and removal of components that were not purchased through us, results in us not being liable for any resulting defects or damage. In these cases our warranty will not be valid.
 - Components made of stainless steel are available in different corrosion resistance classes. In any case, it should be checked what corrosion load is expected for the building or component concerned. Z600 coated steel profiles may show red corrosion spots that do not affect static after a certain period of time.
 - In cases where material supplied by ISOTEC Enerji San. Ve Tic. Ltd. Şti. is re-cut to size on site, please ensure that the cut corners and edges are burr-free to rule out any risk of injury from sharp corners and edges.
 - In cases such as non-compliance with our general safety instructions or the installation of different components, ISOTEC Enerji San. and Tic. Ltd. Şti. has no liability.

COMPONENTS

1. Isotrap Mini V3 (1)

EPDM bonded panel carrier profile.



2. EasyClamp End U60 V2 (2)

Compatible with all ISOTEC systems
End clamp for pv modules with 30-45mm thickness



3. EasyClamp Mid V3 (3)

Compatible with all ISOTEC systems
Middle clamp for pv modules with 30-45mm thickness

4. Self Drilling Screw (4)

It prevents leakage thanks to its pointed screw gasket with gasket, which is preferred for reliable installation. By fixing the Isotrap Mini profile, resistance to maximum forces is provided.



5. Waterproof Rivet (5)

Special rivet with 99.9% tightness guarantee with EPDM protector that protects against moisture and leaks. By fixing the Isotrap Mini profile, resistance to maximum forces is provided.

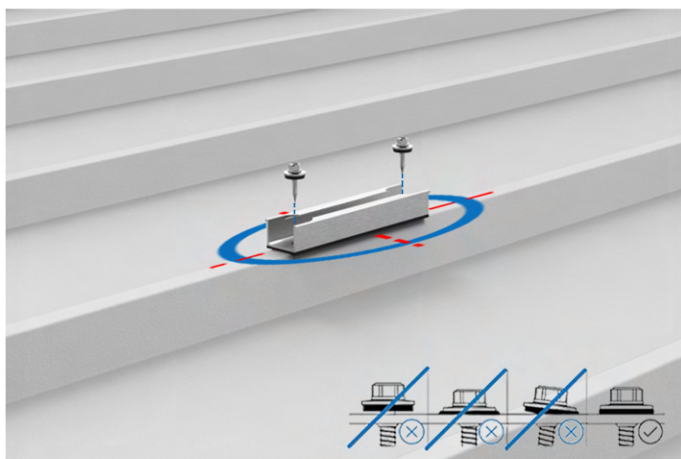
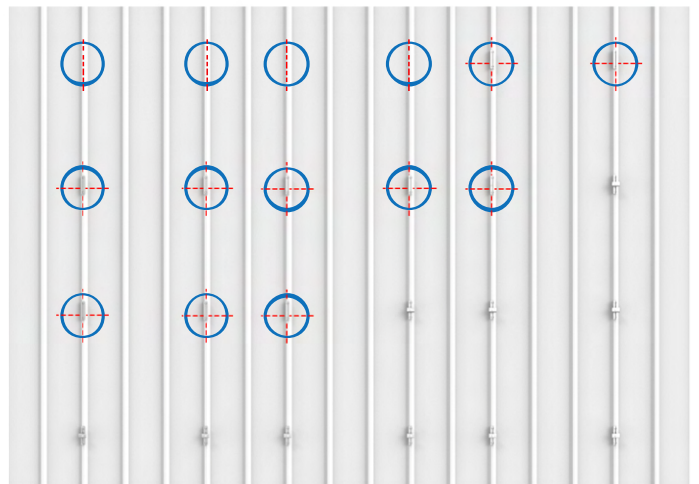
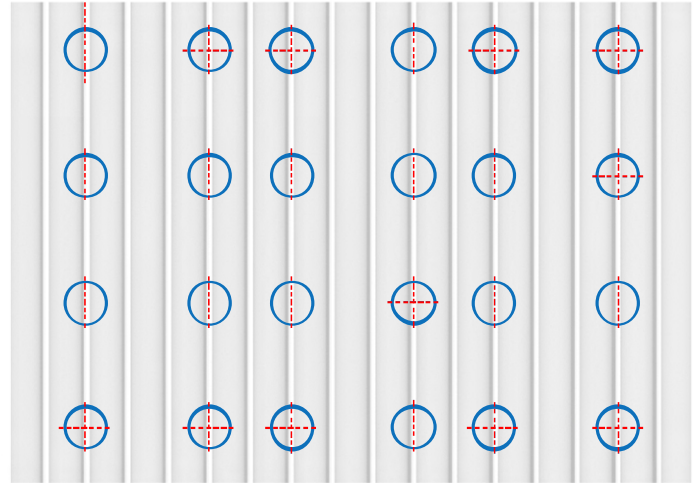


ASSEMBLY

1. Marking

In accordance with the panel layout, the pitch intervals where the Isotrap Mini V3 (1) profiles will be mounted are determined and marked.

The Isotrap Mini V3 (1) profiles are placed on the ribs according to this marking.



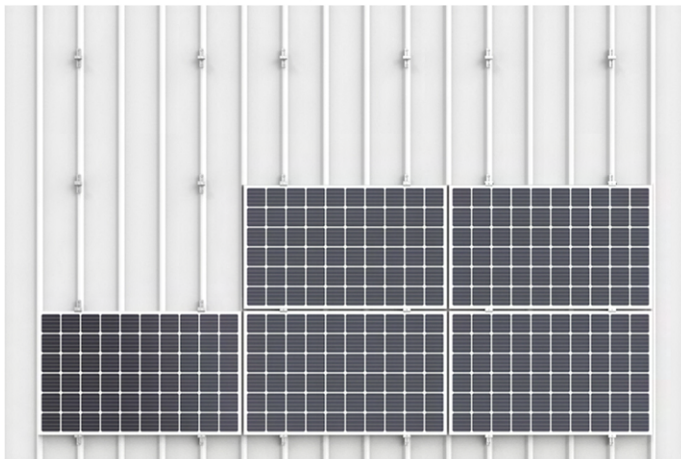
2. Fixing

Sealed pointed screws (4) or waterproof rivet (5) are mounted on the roof vertically through the holes corresponding to the ridge and it should be observed that the gasket is opened.

ASSEMBLY

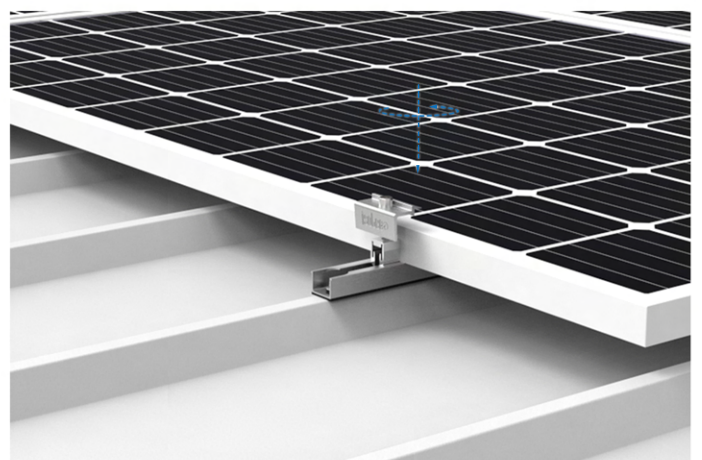
3. Clamp

Easyclamp End (2) or Easyclamp Mid (3) panel holders are placed on the assembled Isotrap Mini V3 (1) profiles, taking into account their positions.



4. Panel

The panels are snapped into the Isotrap Mini V3 (1) profiles.



5. Assembly

Panel assembly is completed by tightening the inbus bolt on the Easyclamp holders (2) - (3) with a torque of 14-17 N.m.

NOTES

This image shows a full page of blank graph paper. The grid consists of small, uniform squares formed by thin, light gray lines. A single vertical line runs down the center of the page, dividing it into two equal halves. There are no margins, text, or other markings on the paper.

Our valued customer,

Thank you for choosing **ISOTEC** for your solar mounting system.

Your opinion is very important to us.

You can always contact us at **+90 (262) 244 43 09** or info@isotec.com.tr for suggestions, feedback and all questions about assembly.

You can be informed about current developments by following us on our social accounts.

